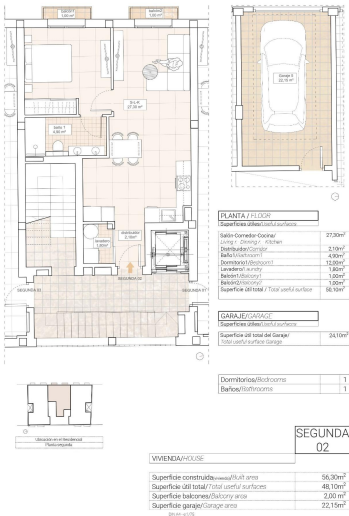


1 bedroom Apartment in Hondón de las Nieves
Ref: PSN8770

175,000 €



Property type : Apartment

Parking : Yes

House area :

56 m²

Location : Hondón de las Nieves

Bedrooms : 1

Bathrooms : 1

✓ Pre-Installed

✓ Lift

Modern Apartments with Stunning Vineyard Views in Hondón de las Nieves – Stylish New-Build Apartments in a Peaceful Valley Setting – Discover these contemporary apartments in Hondón de las Nieves, a charming town nestled in a picturesque valley surrounded by olive groves and almond trees. This exclusive residential complex offers 1, 2, and 3-bedroom apartments, all designed to provide comfort, energy efficiency, and breathtaking views of the Vinalopó vineyards. – Located in the Vinalopó Medio region, this tranquil area is perfect for those seeking a relaxed Mediterranean lifestyle with easy access to nature and essential services. – High-Quality Features for Modern Living – Each apartment is built with premium materials and finishes, ensuring both style and functionality: – Spacious interiors with open-plan layouts. – Fully furnished kitchens with granite countertops. – High-end bathrooms with built-in cisterns and top-quality sanitary fittings. – Energy-efficient design with aerothermal water heating. – Pre-installed ducted air conditioning for year-round comfort. – Double-glazed aluminum windows with thermal insulation. – Reinforced security entrance door for added peace of mind. – Private garage on the ground floor included. – Elevator access for convenience. – Additionally, solar panels are installed on the rooftop to enhance energy efficiency and reduce utility costs. – Prime Location in Hondón de las Nieves – Hondón de las Nieves is a charming Spanish village known for its wine production, traditional culture, and scenic landscapes. The town features historic buildings, local markets, and natural walking trails, making it a fantastic location for both permanent living and holiday retreats. – This new development is situated in a peaceful yet well-connected area, offering easy access to essential services and key locations: – Alicante Airport – 30 km (30-minute drive) – Beaches of Alicante – 35 km (35-minute drive) – Elche – 20 km (20-minute drive) – Crevillente Natural Park – 10 km (15-minute drive) – Golf Courses – 25 km (30-minute drive) – Your Perfect Home in the Heart of Alicante’s Countryside – Enjoy the tranquility of the Hondón Valley while staying close to the vibrant cities of Alicante and Elche. Whether you’re looking for a holiday home, an investment property, or a peaceful place to live year-round, these modern apartments are the perfect choice. – Contact us today for more information or to schedule a viewing! –

