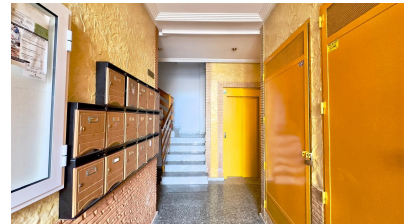
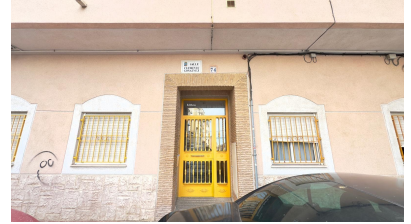


2 bedroom Apartment in Torrevieja

Ref: M-9066838

129,900 €



Property type : Apartment

House area : 58 m²

Location : Torrevieja

Bedrooms : 2

Bathrooms : 1

✓ Lift

✓ Airconditioning

This modern flat located next to Plaza del Calvario, in a convenient and well-connected location in Torrevieja, is just 900 metres from the beach, offering an ideal combination of proximity to the sea and immediate access to all urban amenities. Located on the third floor and facing west, the property enjoys excellent natural light in the afternoon, creating a warm and comfortable atmosphere in all rooms. The property was recently renovated in September and is now brand new, with modern finishes and materials selected for functionality, style and durability. Following the comprehensive refurbishment, the property has two bedrooms, perfectly equipped to offer comfort and relaxation. It also has a fully equipped bathroom with a contemporary design that meets everyday needs with an elegant and practical aesthetic. The living-dining room is an open, spacious and bright space, integrating a French-style kitchen that is fully incorporated into the room, giving a feeling of greater spaciousness and modernity. The living room leads to one of the terraces, ideal for enjoying the outdoors and the Mediterranean climate. The master bedroom also has a second private terrace, providing additional space for relaxation and greater independence. The property is being sold brand new, perfect for moving in without the need for any additional investment. Its location is one of its greatest attractions: situated close to shops, schools, shopping centres, public services and everything you need for daily life, it offers a convenient, practical location with excellent connections to the rest of the city. Overall, this flat next to Plaza del Calvario represents an excellent opportunity for those looking for a modern, refurbished, bright and ready-to-move-in property with terraces, good orientation and all amenities within easy reach, both as a primary residence and as a high-yield investment.

