

3 bedroom Penthouse in Santa Pola

Ref: PSN7767

495,000 €



Property type : Penthouse

Location : Santa Pola

Bedrooms : 3

Bathrooms : 2

Pool : Communal

Views : Sea views

Parking : Yes

House area :

202 m²

✓ Pre-Installed

✓ Lift

✓ Roof Terrace

NEW BUILD RESIDENTIAL COMPLEX IN SANTA POLA. Modern gated residential complex comprising 3 blocks of apartments with large landscaped communal areas including a swimming pool with water beds, children's playground, pergola and bicycle parking. The residential has 3 and 2 bedrooms apartments, both types include 2 full bathrooms, open plan kitchen with living room, fitted wardrobes, terrace, parking space. They have a common garden, swimming pool with beach-type entrance, equipped with showers and a large wooden pergola. It has landscaped areas with palm trees and vegetation, all of which are illuminated. In the central part of the pool there is a shallower area where the water beds are located. The municipality of Santa Pola is located on the popular Costa Blanca on the Mediterranean, south of Alicante and in the Bajo Vinalopó region. The city is in an enviable geographical position, surrounded by natural landscapes and with a special microclimate, which offers a mild climate all year round. Its urban center is bounded by the Castle Fortress and the port to the east and west, and is bordered by the Santa Pola Salinas Natural Park and the Sierra and Cabo de Santa Pola, an ancient reef today characterized by its reef leafy pine trees. Santa Pola located 21 km. from Alicante, the provincial capital with excellent infrastructure and 15 km. away from the international Airport "Elche-Alicante".

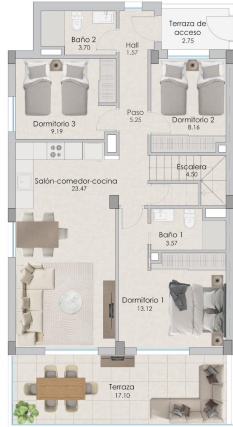


PLANTA 5ta VIVIENDA 5

CALLE ELDA, 228
SANTA POLA

SUPERFICIES ÚTILES		SUPERFICIES CONSTRUIDAS		
Vivienda 1 y 5	Hall de acceso	1,57	Corredor	36,11
	Salón-comedor-cocina	23,47	Alameda	104,82
	Dormitorio 1	13,12		
	Baño 1	3,37		
	Dormitorio 2	8,16		
	Baño 2	3,75		
	Dormitorio 3	9,18		
	Paseo	5,25		
	Escalera	4,60		
	Terraza	17,10		
	Terraza de acceso	2,75		
	Trastero	4,60		
Solarium	77,39			
TOTAL		176,41	202,93	

Las superficies construidas se dan con cubiertas inclinadas, no construidas y pueden variar ligeramente por necesidades técnicas del proyecto de construcción.



PLANTA Cubierta VIVIENDA 5 Terraza

CALLE ELDA, 228
SANTA POLA

SUPERFICIES ÚTILES		SUPERFICIES CONSTRUIDAS		
Vivienda 1 y 5	Hall de acceso	1,57	Cerrada	98,11
	Salón-comedor-cocina	23,47	Abierta	104,82
	Dormitorio 1	13,12		
	Baño 1	3,57		
	Dormitorio 2	8,16		
	Baño 2	3,70		
	Dormitorio 3	9,19		
	Paseo	5,25		
	Escalera	4,50		
	Terraza	17,10		
	Terraza de acceso	2,75		
	Trastero	4,60		
	Solarium	77,39		
TOTAL	174,43		202,93	

