

1 bedroom Apartment in Villajoyosa

Ref: PSN8194

249,000 €



Property type : Apartment

Parking : Yes

House area :

48 m²

Location : Villajoyosa

Bedrooms : 1

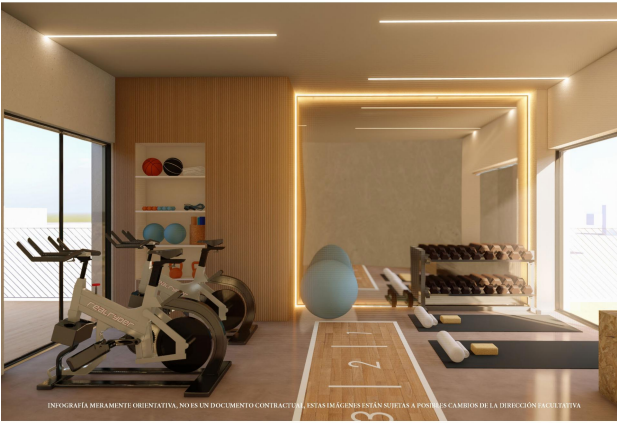
Bathrooms : 1

✓ Lift

✓ Airconditioning

✓ Gym

NEW BUILD APARTMENTS IN THE CENTRE OF VILLAJOYOSA
New Build development of apartments in the heart of the Villajoyosa close to all services. Modern apartments with 1, 2 and 3 bedrooms, open plan kitchen with living area, build-in wardrobes, terraces, domotic system, air conditioning, all with storage room included, elevator, social club, community solarium with the gym. Some properties has a sea view and with parking included. Modern apartment to enjoy the convenience of being in the centre of everything. Villajoyosa, lively and colourful streets, with the aroma of chocolate and a Mediterranean flavour. Immerse yourself in the history of this picturesque seaside town by exploring its charming old town, where the cobbled streets and colourful fishermen's houses will transport you back in time. In addition to its rich cultural heritage, Villajoyosa offers an exquisite gastronomic experience. Let yourself be seduced by the aroma of chocolate and the Mediterranean flavours that fill its streets and restaurants. Villajoyosa is also known for its delicious Valor chocolate factory museum. Villajoyosa located 10 minutes drive from Benidorm and 30 minutes from Alicante airport.

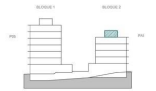


INFORMACIÓN MERAMENTE ORIENTATIVA, NO ES UN DOCUMENTO CONTRACTUAL, ESTAS IMÁGENES ESTÁN SUJETAS A POSIBLES CAMBIOS DE LA DIRECCIÓN FACULTATIVA

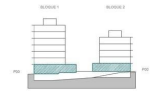
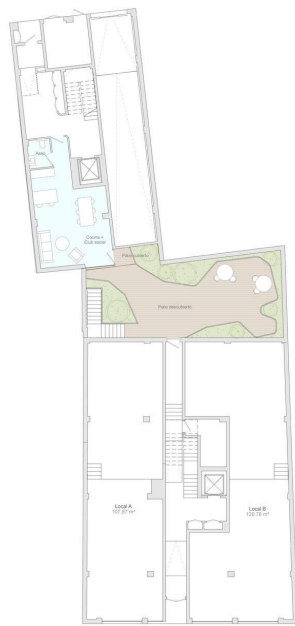


INFORMACIÓN MERAMENTE ORIENTATIVA, NO ES UN DOCUMENTO CONTRACTUAL, ESTAS IMÁGENES ESTÁN SUJETAS A POSIBLES CAMBIOS DE LA DIRECCIÓN FACULTATIVA

ESC. 2 | PLANTA 4
Staircase. 2 | Floor 4



ESC. 0 | PLANTA 0
Staircase. 0 | Floor 0



ESC. 2 | PLANTA 2 | PUERTA B
Staircase: 2 | Floor: 2 | Door B

SUPERFICIE ÚTIL
Usable Area

48,14 m²

SUPERFICIE TERRAZAS
Terrace Area

4,00 m²

SUPERFICIE CONSTRUIDA
/Incl. terrazas/
Built Area /Incl. terrace/

62,83 m²

